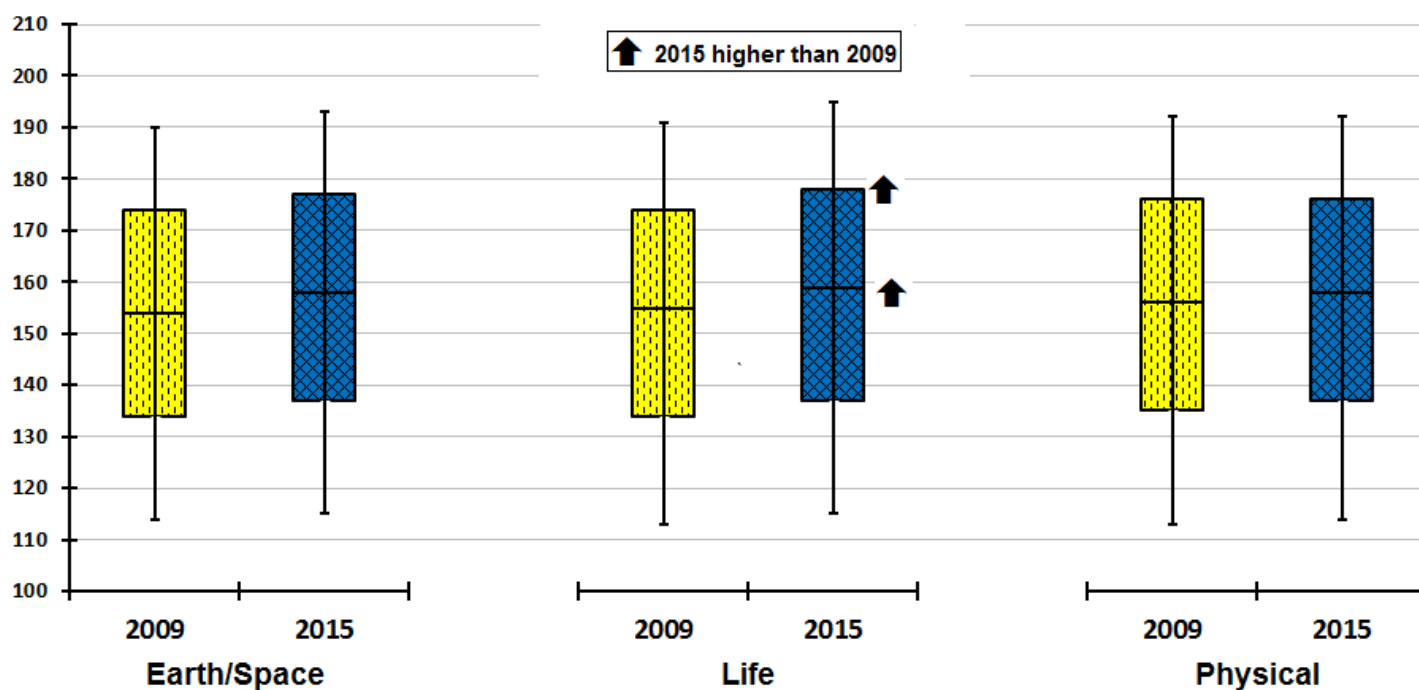


Idaho NAEP Science Strand Percentiles, 2009 vs. 2015, Grade 4

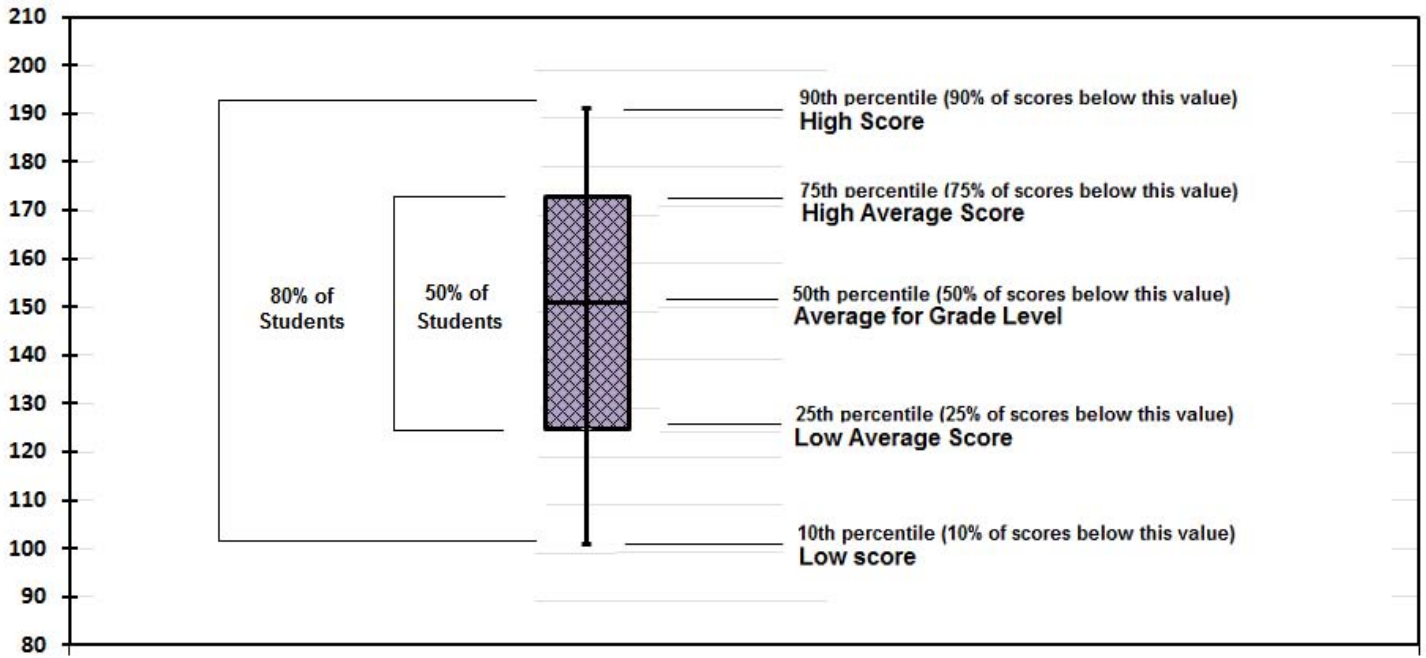
The National Assessment of Educational Progress science assessment used multiple-choice and constructed-response items to examine student knowledge and skills in the earth/space, life and physical sciences. NAEP reports national and state results for the 90th (high), 75th (high average), 50th (average), 25th (low average), and 10th (low) percentiles. NAEP also provides statistical data analysis tools for percentiles on the *NAEP Data Explorer*. Readers who are not familiar with the boxplot display of percentile results used here will find a brief overview on the attached page.



- In earth/space science, none of Idaho's five percentiles were statistically different in 2015 than in 2009.
- In life science, Idaho's Average and High Average percentiles were statistically higher in 2015 than in 2009, while the Low, Low Average and High percentiles were not significantly different in 2015 than in 2009.
- In physical science, none of Idaho's five percentiles were statistically different in 2015 than in 2009.

Note: Comparisons based on statistical tests (.05 level) using unrounded numbers that considered the magnitude of difference and standard errors. **Source:** U.S. Department of Education, Institute of Education Sciences, National Center for Education Statistics, National Assessment of Educational Progress (NAEP), 2009 and 2015 Science Assessments.

Overview of boxplot display of percentiles



Idaho NAEP Science Strand Percentiles, 2009 vs. 2015, Grade 4

NAEP Grade 4	Earth/Space		Life Science		Physical Science	
	2009	2015	2009	2015	2009	2015
90th Percentile	190	193	191	195	192	192
75th Percentile	174	177	174	178	176	176
50th Percentile	154	158	155	159	156	158
25th Percentile	134	137	134	137	135	137
10th Percentile	114	115	113	115	113	114

Notes:

