

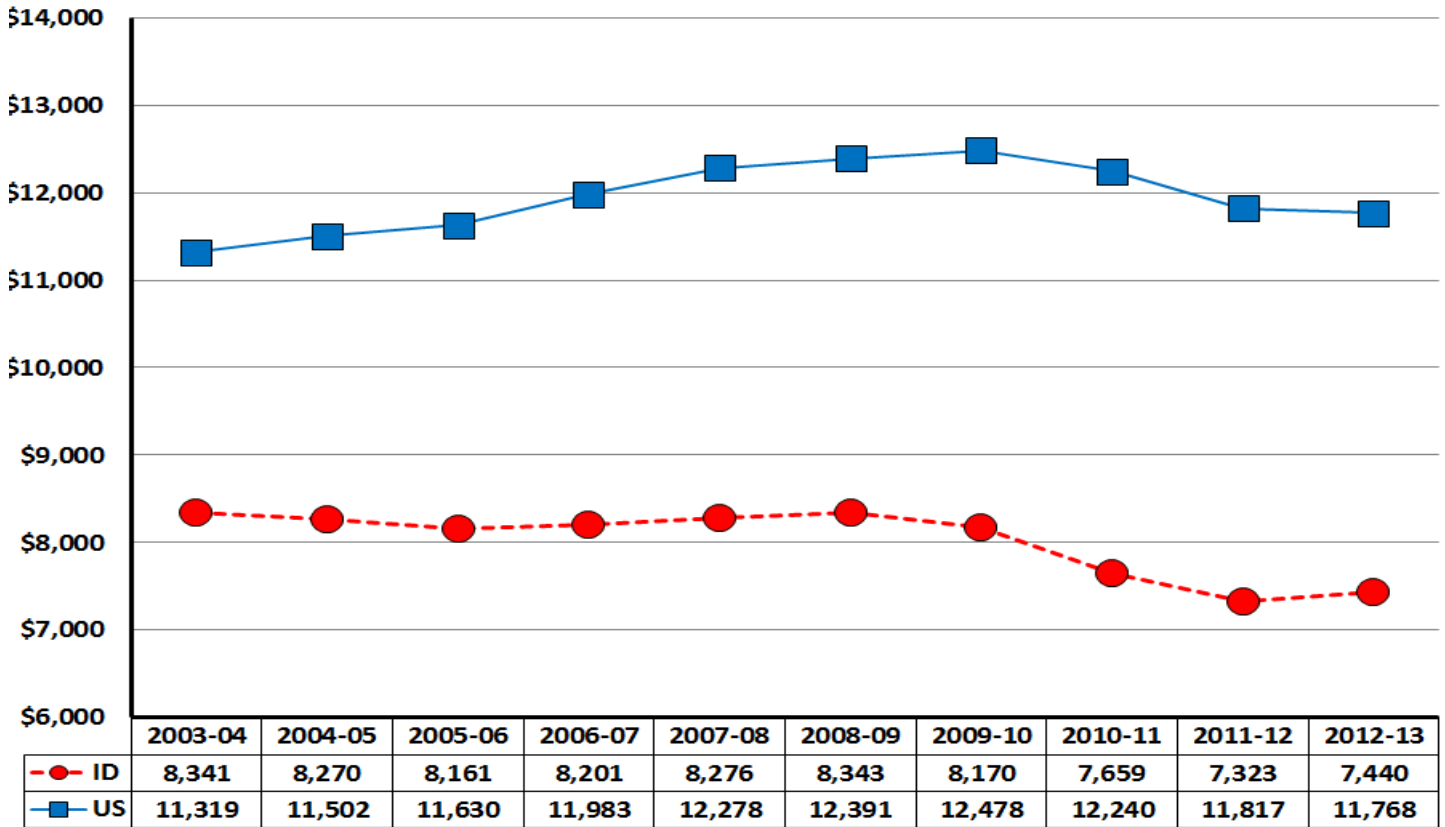
# K-12 Research Idaho

## Bert Stoneberg, Ph.D.

© June 2016



### Most recent current per-pupil expenditures in public elementary and secondary schools, for Idaho and the nation in constant 2014-2015 dollars (based on pupil average daily attendance), 2003-2004 through 2012-2013



NOTE 1: Constant 2014-2015 dollars based on the Consumer Price Index (CPI), prepared by the Bureau of Labor Statistics, U.S. Department of Labor, adjusted to a school-year basis.

NOTE 2: Current expenditures include instruction, support services, food services, and enterprise operations.

SOURCE: U.S. Department of Education, National Center for Education Statistics, Statistics of State School Systems, 1969-70; Revenues and Expenditures for Public Elementary and Secondary Education, 1979-80; and Common Core of Data (CCD), "National Public Education Financial Survey," 1989-90 through 2012-13. This table (236.70) was prepared September 2015.

	2003-04	2004-05	2005-06	2006-07	2007-08	2008-09	2009-10	2010-11	2011-12	2012-13
US	\$11,319	\$11,502	\$11,630	\$11,983	\$12,278	\$12,391	\$12,478	\$12,240	\$11,817	\$11,768
ID	\$8,341	\$8,270	\$8,161	\$8,201	\$8,276	\$8,343	\$8,170	\$7,659	\$7,323	\$7,440
DIFF	\$2,978	\$3,232	\$3,469	\$3,782	\$4,002	\$4,048	\$4,308	\$4,581	\$4,494	\$4,328

- The difference between national and Idaho per-pupil expenditures declined \$987 in FY2012 and \$166 in FY2013.
- The difference between national and Idaho per-pupil expenditures increased \$1,350 from FY2004 to FY2013.
- Idaho per-pupil expenditures declined \$601 while national expenditures declined \$449 from FY2004 to FY2013 .